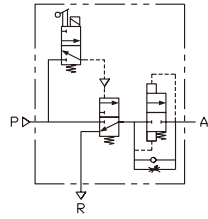


Symbol



Features

The function of soft start valve is to build up air system pressure slowly to increase safety and protection. Please input air supply to P port on soft start valve, when the coil on soft start valve is energized, soft start valve is open and a little air controlled by internal throttle valve output from A port to make air pressure increase slowly in pneumatic system. While output pressure is equal to 50% of input pressure, soft start valve is fully open in highest flow rate. When the coil on soft start valve is de-energized, P port is closed and the air return to R port through internal check valve for exhaust, the pressure in the system is down to zero to protect whole system in safety.



How to order

| VSS | — | 02 | N | B | — | S2 | — | F |
|------------------|-----------|----------------------|--|--|------------------------------|----|---|---|
| Soft Start Valve | Port size | Thread | Mounting | Voltage | Coil type | | | |
| 02 | : 1/4" | Blank : G N : NPT | Blank : W/O bracket B : W/I bracket | S1 : 110VAC S2 : 220VAC S6 : 24VAC S7 : 12VDC S9 : 24VDC | Blank : DIN F : Lead wire | | | |

Specifications

| Model | VSS-02 | VSS-03 | VSS-04 |
|--------------------------|--|--------|--------|
| Port size | 1/4" | 3/8" | 1/2" |
| Fluid | Compressed air | | |
| Acting | Manual | | |
| Operating pressure range | 0.25 ~ 9 kgf/cm ² | | |
| Proof pressure | 15 kgf/cm ² | | |
| Exhaust port size | Rc3/8 | | |
| Ambient temperature | -10°C ~ 60°C | | |
| Duty cycle | 100% ED | | |
| Coil type | DIN (Standard) | | |
| Protection class | IP65 (DIN 40 050) | | |
| Insulation class | F | | |
| Voltage tolerance | ±10% | | |
| Standard voltage | 230vAC, 110vAC, 24vDC(The other voltage is optional) | | |

Dimensions

VSS-02, 03, 04

