

Media: air
 Pressure range: 0 to 9 Bar max
 Media temperature: -10°C +60°C max
 Ambient temperature: -10° to +60°C
 Mounting: any position

3/2 5/2 Foot Pedal

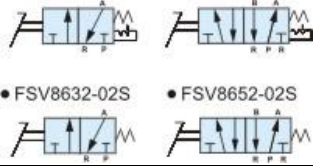
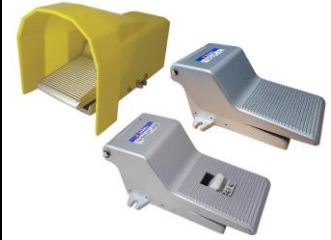
1/4"

S/RETURN + DETENT

3/2 5/2 WAY MECHANICAL

0 – 9 Bar

TYPE FSV



PRESSURE

Ø Port	Function	Operation	Foot Guard	Pressure Rating (Bar)		Part Number	List Price
				Min	Max		
WITHOUT GUARD							
1/4	3/2	Spring Return	NO	0	9	FSV8632-02S	
1/4	3/2	Detent/Latch	NO	0	9	FSV8632-02M	
1/4	5/2	Spring Return	NO	0	9	FSV8652-02S	
1/4	5/2	Detent/Latch	NO	0	9	FSV8652-02M	
WITH FOOT GUARD							
1/4	3/2	Spring Return	YES	0	9	FSV8632-02SF	
1/4	3/2	Detent/Latch	YES	0	9	FSV8632-02MF	
1/4	5/2	Spring Return	YES	0	9	FSV8652-02SF	
1/4	5/2	Detent/Latch	YES	0	9	FSV8652-02MF	

OPTIONS

NPT Thread
 With foot guard (F) or without foot guard, 3/2 (FSV8632) or 5/2 (FSV8652), Spring return (S) or mechanical detent / latch (M)

CONSTRUCTION

Body: Aluminium Alloy, Internal parts: Stainless steel
 Silencers: Bronze (Included)
 Foot guard: Polycarbonate
 Test pressure: 10 Bar

REPAIR KIT

Foot Guard

Valve part number + foot guard

OVERALL DIMENSIONS

