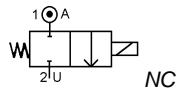


Media: air – water – gas – light oil - vacuum 10⁻⁶ torr
 Pressure range: 0 to 15 Bar max
 Media temperature: +185°C max
 Ambient temperature: -10°C to +50°C max
 Media viscosity: 50 centistokes max
 Mounting: any position
 Opening / Closing time: 20 mSec Max



2/2 Stainless

1/8 - 1/2
 NORMALLY CLOSED
 2 WAY DIRECT ACTING
 0 – 15 Bar
 TYPE ADS612



PRESSURE

Ø Port BSP	Ø Orifice (mm)	Coil	Flow Kv Ltr/min	Pressure Rating (Bar) ΔP			Seals	Part Number
				Min	Max AC	Max DC		
1/8	3.0	WPG1	3.7	0	10	7	NBR +100°C Max	ADS6A + seal + voltage
	4.0		8.3	0	7	5		ADS6B + seal + voltage
	5.0		9.2	0	5	3.5		ADS6C + seal + voltage
1/4	3.0		3.7	0	10	7		ADS8A + seal + voltage
	4.0		8.3	0	7	5		ADS8B + seal + voltage
	5.0		9.2	0	5	3.5		ADS8C + seal + voltage
3/8	4.0	WPG2	3.7	0	10	7	Silicone EPDM FKM +120°C Max	ADS10A + seal + voltage
	6.0		11.3	0	5	3.5		ADS10B + seal + voltage
	8.0		13.9	0	2	1.4		ADS10C + seal + voltage
	WPA3C	4.0	3.7	0	15	10		ADS10A-C3 + seal + voltage
		6.0	11.3	0	7	5		ADS10B-C3 + seal + voltage
		8.0	13.9	0	3	2		ADS10C-C3 + seal + voltage
1/2	6.0	WPG2	11.3	0	5	3.5	*PTFE *VST +185°C Max	ADS12A + seal + voltage
	8.0		13.9	0	2	1.4		ADS12B + seal + voltage
	6.0		11.3	0	7	5		ADS12A-C3 + seal + voltage
	WPA3C	8.0	13.9	0	3	2		ADS12B-C3 + seal + voltage

OPTIONS

IP67 (EN60529:1991+A1:2000) UL + CSA Approved Coil & IP65 LED Connector PG11 – DIN 43650 A (Except WPA3C coil IP54)
 ATEX EExmIT4 II 2G & 2D IP65 T130°C (WPG1 Pressure same, WPG2 70% of DC rating, WPA3C not available)
 * PTFE, VST, Neoprene, ECO, HNBR or Hypalon Seals
 Silver shading ring (ADxxS)
 Manual Override
 NPT Thread
 Other custom-made options available upon request

ELECTRICAL DATA

Voltage (-10% + 15%) Continuous duty 100%	Coil	Power Consumption		Insulation class	Enclosure	Electrical connections
		Inrush	Holding			
~ 24 - 110 - 230 (50 or 60 Hz)	WPG1	11.2VA	8.2VA	H 180°C	IP 65 with connector	3 spades DIN 43650A DIN 40050 VDE 0110
= 12 - 24 (DC)		12 Watts				
~ 24 - 110 - 230 (50 or 60 Hz)	WPG2	18.7VA	15.3VA			
= 12 - 24 (DC)		18 Watts				
~ 24 - 110 - 230 (50 or 60 Hz)	WPA3C	37.5VA	27.5VA	N 200°C	IP54	30cm flying lead wire
= 12 - 24 (DC)		22.6 Watts				

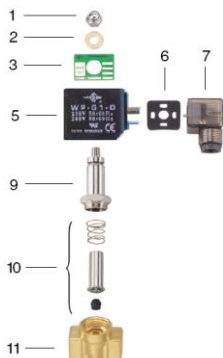
CONSTRUCTION

Body: Forged 316 stainless steel (CF8M)
 Tube 304 stainless steel, armature 430F stainless steel
 Shading ring: copper (Optional Silver)
 Seals and gaskets: FKM (Optional EPDM, NBR, Silicone, PTFE, VST, Neoprene, ECO, HNBR, Hypalon, Butyl IIR)
 Moulded coil: Resin

REPAIR KIT

Coil	Coil (WPG1 or WPG2 or WPA3C) + voltage
Armature + Seal assembly	SP210 + Valve Part Number

OVERALL DIMENSIONS



Item	Part No	Description
1	SP201-*	Nut
2	SP202-*	Washer
3	SP203-*	Nameplate
5	WPG+*	Coil
6	SP206-*	Gasket
7	SP207-*	Connector
9	SP209-*	Core Tube
10	SP210-*	Armature Assembly
17	SP211-*	Valve Body

* = Valve Part Number

Model	A	B	C	F	G	H	Kg
ADS6/8	41	19	89	63	15	10.5	0.47
ADS10	50	25	90	65	15	11.7	0.73
ADS12	55	27	91	65	17	13	0.78

