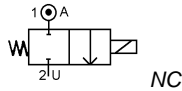


Media: air – water – gas – light oil - vacuum 10<sup>-6</sup> torr  
 Pressure range: 0 to 15 Bar max  
 Media temperature: 120°C max  
 Ambient temperature: -10°C to +50°C max  
 Media viscosity: 50 centistokes max  
 Mounting: any position  
 Opening / Closing time: 20 mSec Max



# 2/2 Brass

## 1/8 – 1/2

### NORMALLY CLOSED 2 WAY DIRECT ACTING

### 0 – 15 Bar

## TYPE AD612



### PRESSURE

Ø Port BSP	Ø Orifice (mm)	Coil	Flow Kv Ltr/min	Pressure Rating (Bar) ΔP			Seals	Part Number	
				Min	Max AC	Max DC			
1/8	3.0	WPG1	3.7	0	10	7	NBR +100°C Max	AD6A + seal + voltage	
	4.0		8.3	0	7	5		AD6B + seal + voltage	
	5.0		9.2	0	5	3.5		AD6C + seal + voltage	
1/4	3.0		3.7	0	10	7		AD8A + seal + voltage	
	4.0		8.3	0	7	5		AD8B + seal + voltage	
	5.0		9.2	0	5	3.5		AD8C + seal + voltage	
3/8	4.0	WPG2	3.7	0	10	7		Silicone EPDM VITON *PTFE *VST +120°C Max	AD10A + seal + voltage
	6.0		11.3	0	5	3.5			AD10B + seal + voltage
	8.0		13.9	0	2	1.4			AD10C + seal + voltage
	WPA3C	4.0	3.7	0	15	10			AD10A-C3 + seal + voltage
		6.0	11.3	0	7	5			AD10B-C3 + seal + voltage
		8.0	13.9	0	3	2			AD10C-C3 + seal + voltage
1/2	6.0	WPG2	11.3	0	5	3.5			AD12A + seal + voltage
	8.0		13.9	0	2	1.4			AD12B + seal + voltage
	6.0		WPA3C	11.3	0	7			5
	8.0	13.9		0	3	2			AD12B-C3 + seal + voltage

### OPTIONS

IP66 (EN60529:1991+A1:2000) CSA + UL Approved Coil & IP65 LED Connector PG11 – DIN 43650 A  
 ATEX EExmIIT4 II 2G & 2D IP65 T130°C (WPG1 Pressure same, WPG2 70% of DC rating, WPA3C not available)  
 \* PTFE, VST, Neoprene, ECO, HNBR or Hypalon Seals  
 Silver shading ring (ADxxS)  
 Manual Override  
 NPT Thread  
 Other custom-made options available upon request

### ELECTRICAL DATA

Voltage (-10% + 15%) Continuous duty 100%	Coil	Power Consumption		Insulation class	Enclosure	Electrical connections
		Inrush	Holding			
~ 24 - 110 - 230 (50 or 60 Hz)	WPG1	11.2VA	8.2VA	H 180°C	IP 65 with connector	3 spades DIN 43650A DIN 40050 VDE 0110
= 12 - 24 (DC)		12 Watts				
~ 24 - 110 - 230 (50 or 60 Hz)	WPG2	18.7VA	15.3VA			
= 12 - 24 (DC)		18 Watts				
~ 24 - 110 - 230 (50 or 60 Hz)	WPA3C	37.5VA	27.5VA	N 200°C	IP 54	30cm flying lead wire
= 12 - 24 (DC)		22.6 Watts				

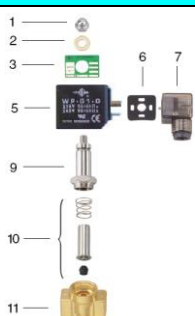
### CONSTRUCTION

Body: Brass  
 Tube and Spring: 304 Stainless/ Brass Armature: 430F Stainless Other internal parts: Stainless  
 Shading ring: copper (optional Silver)  
 Seals and gaskets: FKM (Optional EPDM, NBR, Silicone, PTFE, VST, Neoprene, ECO, HNBR, Hypalon, Butyl IIR)  
 Moulded coil: Resin

### REPAIR KIT

Coil	Coil size (WPG1 or WPG2 or WPA3C) + voltage
Armature + Seal	SP210 + Valve Part Number

### OVERALL DIMENSIONS



Item	Part No	Description
1	SP201-*	Nut
2	SP202-*	Washer
3	SP203-*	Nameplate
5	WPG*	Coil
6	SP206-*	Gasket
7	SP207-*	Connector
9	SP209-*	Core Tube
10	SP210-*	Armature Assembly
17	SP211-*	Valve Body

\* = Valve Part Number

Model	A	B	C	F*	G	H	Kg
AD6	41	19	85	63	15	10.5	0.47
AD8	41	19	89	63	15	10.5	0.47
AD10	50	25	90	65	15	11.7	0.73
AD12	55	27	91	65	17	13	0.78

