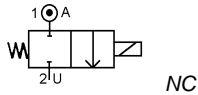


Media: vacuum (10 Torr) - air - water - steam
 Pressure range: 0 to 10 Bar max
 Media temperature: -70°C to +180°C Max
 Ambient temperature: -20°C to +50°C
 Media viscosity: 50 centistokes max
 Mounting: upright (+/- 15° from vertical)



2/2 Bronze Steam

3/8 – 1”
 NORMALLY CLOSED
 2 WAY DIRECT ACTING
 0 – 10 Bar
 TYPE MKS



PRESSURE

Ø Port BSP	Ø Orifice (mm)	Flow Kv Ltr/Min	Pressure Rating (Bar)				Part Number
			Min	Max Steam	Max Air / Water	Max Oil	
3/8	10	21.7	0	10	8	7	MK10SM17 + voltage
1/2	14	42.9	0	10	8	7	MK15SM17 + voltage
3/4	19	70.07	0	10	8	7	MK20SM17 + voltage
1	25	88.66	0	10	8	7	MK25SM17 + voltage

OPTIONS

IP65 Coil & PG11 DIN43650A Connector
 Flanged and other custom made options

ELECTRICAL DATA

Voltage (-10% + 10%) Continuous duty 100%		Coil	Power Consumption		Insulation class	Enclosure	Electrical Connections
~	=		Inrush	Holding			
~	24 - 110 - 230 (50 or 60 Hz)	M17	35VA	26VA	H 180°C	IP65 With Connector	3 spades DIN43650 DIN40050 VDE0110
=	24 (DC)		19 Watts				

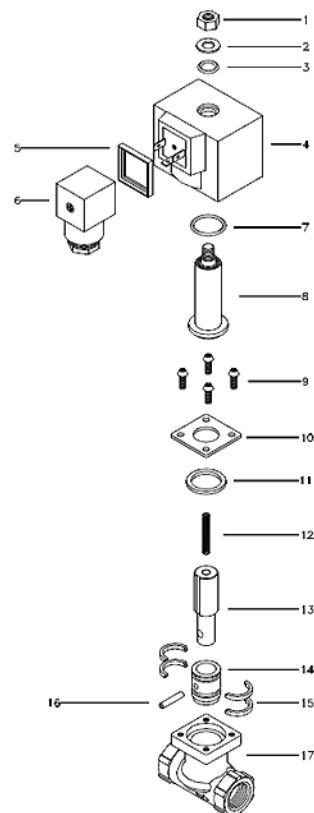
CONSTRUCTION

Body: Bronze BC6
 Piston: Stainless steel 303,304, KM31 and Bronze BC6, PTFE
 Tube: Stainless steel 304 & KM31
 Seals and gaskets: PTFE & Graphite impregnated PTFE

REPAIR KIT

Coil	M17 + Voltage
Piston Kit	KIT + valve part number
Armature	SP + Valve Part Number -ARMATURE

OVERALL DIMENSIONS



NO.	Description	Material
1	Nut	BSBM
2	Washer	SPC
3	O ring	Viton
4	H Class IP65 coil	
5	Din Connector Gasket	
6	DIN Connector	
7	O ring	Viton
8	Core Tube	SUS304,KM-31
9	Bolts	SUS304
10	Plate	SPC
11	Packing	TEFLON
12	Plunger spring	SUS304
13	Armature	KM-31
14	Piston	BC 6
15	Piston ring	TEFLON
16	Sleeve pin	SUS303L
17	Valve body	BC 6

Model	L	H	A	B	C	D	Port	Kg
MK10M17S	53	90	13	24			3/8	0.85
MK15M17S	63	120	17	30			1/2	0.95
MK20M17S	74	128	19	33	56	62	3/4	1.4
MK25M17S	88	133	24	41			1	1.7

