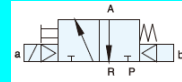


Media: air  
 Pressure range: 2 to 8 Bar max  
 Media temperature: +50°C max  
 Ambient temperature: -10°C to +50°C max  
 Mounting: any position  
 Weight (including coil): 280g, 450g, 685g

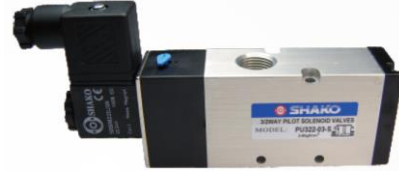
# 3/2 Single Solenoid

1/4" 26mm, 3/8" 30mm or 1/2" 34mm Width  
 3/2 Normally Closed or Open  
 SERVO ASSISTED  
 2 – 8 Bar  
 TYPE PU322(N)

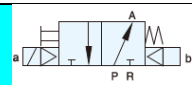
### 3/2 Way Normally Closed PU322 Series



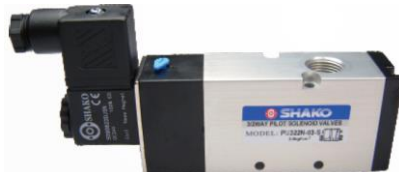
| Ø Port BSP | Ø Orifice (mm <sup>2</sup> ) | Pressure Rating (Bar) ΔP |     | Max Work | Part Number        |
|------------|------------------------------|--------------------------|-----|----------|--------------------|
|            |                              | Min                      | Max |          |                    |
| 1/4        | 18                           | 2                        | 8   | 10       | PU32202S + voltage |
| 3/8        | 35                           | 2                        | 8   | 10       | PU32203S + voltage |
| 1/2        | 70                           | 2                        | 8   | 10       | PU32204S + voltage |



### 3/2 Way Normally Open PU322N Series



| Ø Port BSP | Ø Orifice (mm <sup>2</sup> ) | Pressure Rating (Bar) ΔP |     | Max Work | Part Number         |
|------------|------------------------------|--------------------------|-----|----------|---------------------|
|            |                              | Min                      | Max |          |                     |
| 1/4        | 18                           | 2                        | 8   | 10       | PU322N02S + voltage |
| 3/8        | 35                           | 2                        | 8   | 10       | PU322N03S + voltage |
| 1/2        | 70                           | 2                        | 8   | 10       | PU322N04S + voltage |



### OPTIONS

IP65 Coil & Connector PG9 – DIN 43650 B & manual over ride (option flying lead wire coil F)  
 NPT Thread  
 ATEX 22001EX Coil: ATEX EExmIT4 II 2G & 2D IP65 T130°C

### ELECTRICAL DATA

| Voltage (-10% + 15%)<br>Continuous duty 100% | Coil  | Power Consumption |         | Insulation class | Enclosure                  | Electrical connections                          |
|--|-------|-------------------|---------|------------------|----------------------------|---|
|  |       | Inrush            | Holding |                  |                            |   |
| ~ 24 - 110 - 230 (50 or 60 Hz)               | 22001 | 7.6 VA            | 6 VA    | F 155°C          | IP 65<br>with<br>connector | 3 spades<br>DIN 43650B<br>DIN 40050<br>VDE 0110 |
| = 12 - 24 - 48 - 110 (DC)                    |       | 4.5 Watts         |         |                  |                            |   |

### CONSTRUCTION

Body: Anodised Aluminium, Tube and internal parts: Stainless steel  
 Seals and gaskets: NBR, Moulded coil: Resin

### OVERALL DIMENSIONS

