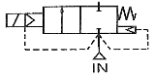


Media: air – water – light oil - steam  
 Pressure range: 0.5 to 20 Bar max  
 Media temperature: +200°C Max  
 Ambient temperature: -30°C to +60°C  
 Media viscosity: 50 centistokes max  
 Mounting: coil upright



NC

# 2/2 Steam Flanged

DN25 – DN50  
 NORMALLY CLOSED  
 2 WAY SERVO ASSISTED  
 0.5 – 20 Bar  
 TYPE SAF



## PRESSURE

| Ø Port PN16 | Ø Orifice (mm) | Flow Kv Ltr/ min | Pressure Rating (Bar) ΔP |           |                | Part Number      |
|-------------|----------------|------------------|--------------------------|-----------|----------------|------------------|
|             |                |                  | Min                      | Max Steam | Max Air/ Water |                  |
| DN25        | 25             | 188.8            | 0.5                      | 12        | 20             | SA25PF + voltage |
| DN32        | 35             | 371.8            | 0.5                      | 12        | 20             | SA35PF + voltage |
| DN40        | 35             | 371.8            | 0.5                      | 12        | 20             | SA40PF + voltage |
| DN50        | 50             | 686.4            | 0.5                      | 12        | 20             | SA50PF + voltage |

## OPTIONS

IP67 (EN60529:1991+A1:2000) UL + CSA Approved Coil & IP65 LED Connector PG11  
 ATEX 22003EX Coil: ATEX EExmII T4 II 2G & 2D IP65 T130°C 10 Bar Max  
 WPA3C IP54H rated coil with 30cm flying leads  
 ANSI150Lb, JIS10K or other flange  
 Other custom-made options available upon request

Included

## ELECTRICAL DATA

| Voltage (-10% + 10%)<br>Duty 100%      | Coil  | Power Consumption |           | Insulation class | Enclosure               | Electrical connections                        |
|--|-------|-------------------|-----------|------------------|-------------------------|---|
|  |       | Inrush            | Holding   |                  |                         |   |
| = 12 – 24 – 48 – 110 DC DIN            | WPG2  | 18.7VA            | 15.3VA    | H 180°C          | IP 65<br>With connector | 3 spades<br>DIN 43650<br>DIN 40050<br>VDE0110 |
| ~ 24 - 110 – 240 - 380 (50/ 60 Hz) DIN |       | 18 Watts          |           |                  |                         |   |
| ~ 24 - 110 - 230 (50 60 Hz)            | WPA3C | 88VA              | 48 - 67VA |                  |                         |   |
| = 12 – 24 (DC)                         |       | 22 Watts          |           |                  | IP54                    | 30cm lead wires                               |

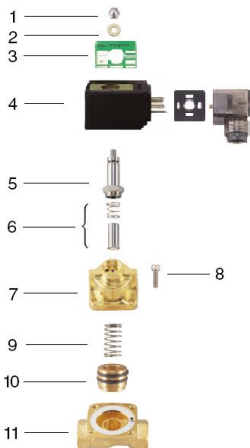
## CONSTRUCTION

Body: Brass, Tube and internal parts: Stainless steel  
 Seals and gaskets: PTFE, Moulded coil: Resin

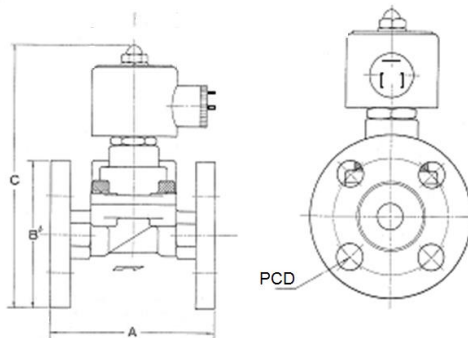
## REPAIR KIT

|        |                           |
|--------|---------------------------|
| Coil   | WPG2 + voltage            |
| Piston | SP210 + Valve Part Number |

## OVERALL DIMENSIONS



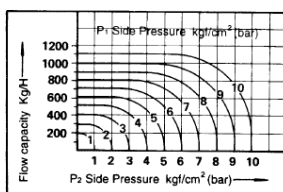
| Model  | A   | B   | C   | PCD | Kg   |
|--------|-----|-----|-----|-----|------|
| SA25PF | 130 | 115 | 188 | 85  | 1.8  |
| SA35PF | 160 | 140 | 205 | 100 | 3.3  |
| SA40PF | 160 | 150 | 205 | 110 | 3.25 |
| SA50PF | 200 | 165 | 240 | 125 | 6.8  |



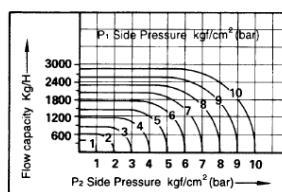
| Item | Part No  | Description   |
|------|----------|---------------|
| 1    | SP-201-* | Nut           |
| 2    | SP-202-* | Washer        |
| 3    | SP-203-* | Name Plate    |
| 4    | SP-204-* | Coil          |
| 5    | SP-205-* | Solenoid Tube |
| 6    | SP-206-* | Armature Core |
| 7    | SP-207-* | Valve Bonnet  |
| 8    | SP-208-* | Screw         |
| 9    | SP-209-* | Spring        |
| 10   | SP-210-* | Piston        |
| 11   | SP-211-* | Valve Body    |

\* = valve part number

● Fluid: Steam SA-25(AF)



● Fluid: Steam SA-35.40(AF)



● Fluid: Steam SA-50(AF)

