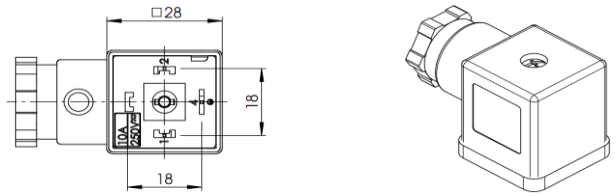


# Connector, form A, analogue with EN 175301-803 (ISO 4400)

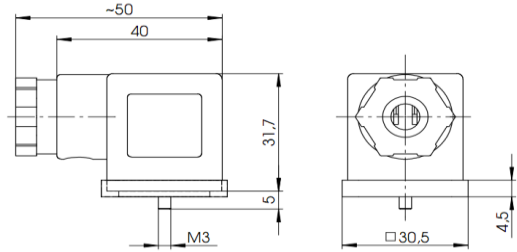
## Housing

Type	one-piece
Color	opaque (milky)
Material	PA6 GF20
Imprint	circuit diagram; black; top side



## Cable gland

Thread	M20 x 1,5 mm
Cable diameter	6-8 mm
Color	black
Material	PA6 GF30
Tightening torque	1,8 ± 0,2 Nm



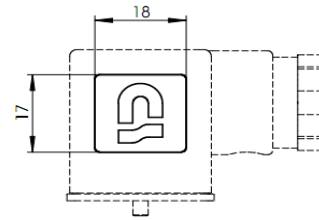
## Terminal block

Material	PA6 GF30
Poles	2 + PE
Direction of protecting earth	12 h
Contact distance	18 mm

## Contacts

Material	CuZn, tin-plated
Resistance	< 15 mOhm
Conductor cross-section	0,5 - 1,5 mm <sup>2</sup>
Tightening torque	0,2 ± 0,1 Nm
Wire protection	without protection element

## Logo



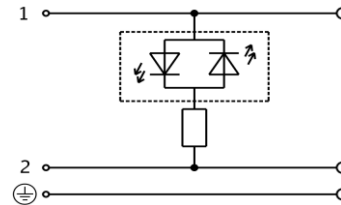
## Gasket

Material	NBR, black
Type	profile

## Fastening screw

Material	steel 4.8, zinc-plated
Size	M3 x 33,5 mm (with cross recess)
Tightening torque	0,4 ± 0,1 Nm
Sealing washer	n/a

## Circuit diagram



## Circuit

Circuit	function display LED
Color of LED	red
Protecting element	n/a
Voltage	230 V ± 15 %
Current type	AC / DC
Operating current	max. 10 A
Protecting against wrong polarity	yes

## General properties

Ambient temperature range	-25°C ... +90°C
RoHS	yes
CSA approval	n/a

## Packaging

100 pcs packaging. Terminal block and housing are packed in pre-assembled condition. Cable gland components are pre-assembled in housing. Fastening screw is inserted in the packet in packaged condition. Profile gasket is inserted into the packet in packaged condition.

				Zulässige Abweichung für Maße ohne Toleranzangabe Unless otherwise specified tolerances DIN ISO 2768-v	Format/Size: A4 Werkstoff: Material:	Maßstab/Scale:	Gewicht/Weight:
2	29839	2020.02.11	AKO	Schutzvermerk beachten Observe protection note ISO 16016	Benennung: Title:  <b>Connector field att. A 01Er</b>		
1	29329	2019.05.28	GJO				
Ind Rev	Änderung-Nr. Change no.	Datum Date	Name By		Ident. - Nr.:	Freigabe-Nr.: Approval no.:	Blatt: Sheet:
Geprüft: Checked:	2020.02.11 JONAS				611-201-0149	27389	1/1
Erstellt: Created:	2017.03.21 MANGRA				Ersatz für/Replacement for:		

SAP TIM