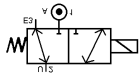


Media: air – water – gas – light oil
 Pressure range: 0 to 11 Bar max
 Media temperature: -10°C +100°C max
 Ambient temperature: -20° to +60°C
 Media viscosity: 50 centistokes max
 Mounting: any position
 Weight: 460g / 670g



Universal

3/2 Stainless Steel

1/4

UNIVERSAL

3 WAY DIRECT ACTING

0 – 11 Bar

TYPE VXS



PRESSURE

Ø Port BSP	Ø Orifice (mm)	Flow Kv Ltr/ min	Coil	Pressure Rating (Bar)				Part Number
				Min	Max AC	Max DC	Seal	
1/4	1.6	1.28	WPG1	0	7	4.9	NBR	VXS3121N + voltage
							FKM	VXS3121V + voltage
	2.2	2.28	WPG1	0	5	3.5	NBR	VXS3122N + voltage
							FKM	VXS3122V + voltage
1.6	1.28	WPG2	0	11	7.7	NBR	VXS3221N + voltage	
						FKM	VXS3221V + voltage	
2.2	2.28	WPG2	0	7	4.9	NBR	VXS3222N + voltage	
						FKM	VXS3222V + voltage	

OPTIONS

IP67 (EN60529:1991+A1:2000) UL + CSA Approved Coil + IP65 Connector PG11 with LED – DIN 43650 A NPT Thread

ELECTRICAL DATA

Voltage (-10% + 10%) Continuous duty 100%	Coil	Power Consumption		Insulation class	Enclosure	Electrical connections
		Inrush	Holding			
~ 24 - 48 - 110 - 230 - 380 (50 or 60 Hz)	WPG1	11.2VA	8.2VA	H 180°C	IP 65 with connector	3 spades DIN 43650 DIN 40050 VDE 0110
= 12 - 24 - 48 (DC)		12 Watts				
~ 24 - 48 - 110 - 230 - 380 (50 or 60 Hz)	WPG2	18.7VA	15.3VA			
= 12 - 24 - 48 (DC)		18 Watts				

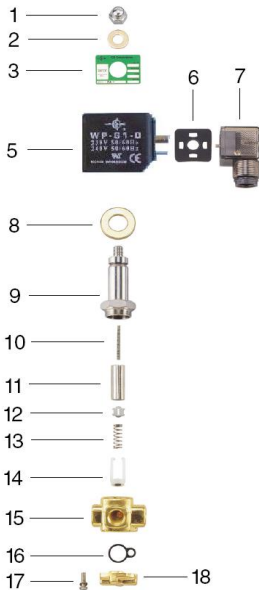
CONSTRUCTION

Body : 316 stainless steel
 Tube and Spring: 304 Stainless Armature: 430F Stainless Other internal parts: Stainless
 Seals and gaskets: NBR or FKM
 Moulded coil: Resin

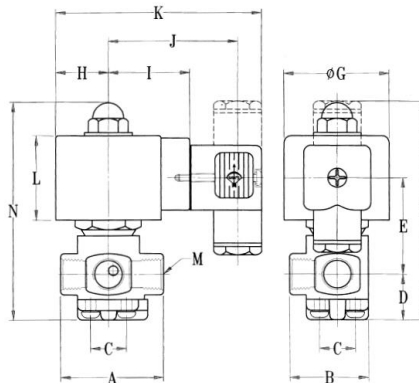
REPAIR KIT

Coil	Coil (WPG1 or WPG2) + voltage
Armature Assembly	SP + Valve Part Number -ARMATURE

OVERALL DIMENSIONS



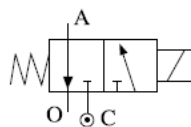
Model	A	B	C	D	E	F	G	H	I	J	K	L	M	N
VXS31	43	33	15	19	46	96	35	20	33	54	86	33	1/4	92
VXS32	43	33	15	19	48	98	40	23	35	56	89	38	1/4	95



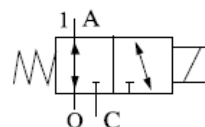
Inlet C= Normally Closed

Inlet O= Normally Open

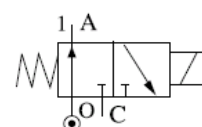
Inlet A= Universal



Normally closed



Universal



Normally open