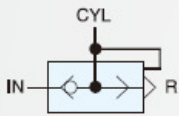


Symbol



Features

- * Increase piston speed instantly.
- * The valve is able to install on cylinder ports



How to order

Q

QUICK EXHAUST VALVES

01

Port size

01	1/8"	04	1/2"
02	1/4"	06	3/4"
03	3/8"		

N

Thread

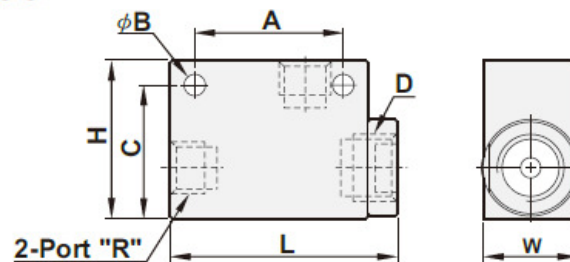
Blank	G
N	NPT
R	Rc

Specifications

Model	Q-01	Q-02	Q-03	Q-04	Q-06
Port size	1/8"	1/4"	3/8"	1/2"	3/4"
Body material	Aluminum alloy				
Fluid	Compressed air				
Sectional area	16mm ²	27mm ²	28mm ²	71mm ²	72.5mm ²
Operating pressure range	0.5 ~ 9.9 kgf/cm ²				
Proof pressure	10 kgf/cm ²				
Max. flow rate l/min	886	1823	2300	3000	3848
Ambient temperature	-10°C ~ 80°C				

Dimensions

Q-01, 02, 03, 04, 06



Model	R	L	W	H	A	B	C	D
Q-01	1/8"	46.0	19.0	32.0	30.0	φ 4.3	27.0	PS 1/4
Q-02	1/4"	61.5	25.5	38.0	39.0	φ 5.6	31.5	PS 3/8
Q-03	3/8"	61.5	25.5	38.0	39.0	φ 5.6	31.5	PS 3/8
Q-04	1/2"	98.0	38.0	63.7	60.0	φ 8.5	50.5	PS 3/4
Q-06	3/4"	98.0	38.0	63.7	60.0	φ 8.5	50.5	PS 3/4