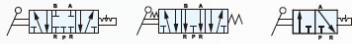
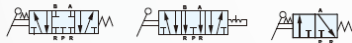


Media: air - vacuum
 Pressure range: 0 to 9 Bar max
 Media temp: -10°C +60°C max
 Ambient temperature: -10°C to +60°C
 Mounting: any position

• TSV8753-02M • TSV8753-02SX • TSV9832-M



• TSV8753-02S • TSV8753-02MX • TSV9832-S



5/3 3/2 Hand Control

1/8 1/4 3/8

Mechanical Lever Valves

3+5 WAY DIRECT ACTING

0 – 9 Bar

TYPE TSV8753-9832



PRESSURE

Ø Port	Ø Orifice (mm²)	Pressure Rating (Bar)		Function	Valve type	Picture	Part Number
		Min	Max				
1/4 (02)	18mm²	0	9	5/3	Spring return		TSV8753-02S
		0	9		Spring return exhaust centre		TSV8753-02SX
1/4 (02) 3/8 (03)	1/4 18mm²	0	9		Detent		TSV8753 + port + M
	3/8 (35mm²)	0	9		Detent with exhaust centre		TSV8753 + port + MX
1/8 (01) 1/4 (02)	1/8 18mm²	0	9	3/2	Detent		TSV9832 + port + M
	1/4 35mm²	0	9		Spring Return		TSV9832 + port + S

OPTIONS

NPT Thread (TSV +port +N)
 Mounting bracket (F)

CONSTRUCTION

Body : Aluminium alloy, Panel dimension 30mm, internal parts : Stainless steel, Seals and gaskets : NBR
 Test pressure: 10 Bar

OVERALL DIMENSIONS

