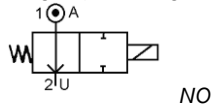


Media: acid – detergent – bleach - vinegar  
 Pressure range: 0 to 1 Bar max  
 Media temperature: -15°C to +90°C max  
 Ambient temperature: -10°C to +50°C  
 Media viscosity: 50 centistokes max  
 Mounting: any position  
 Weight (including coil): 200g



# 2/2 PPA

## 1/4 DRY - ARMATURE NORMALLY OPEN 2 WAY DIRECT ACTING 0 – 1 BAR TYPE PPA2



### PRESSURE

Ø Port BSP	Ø Orifice (mm)	Flow Kv Ltr/ min	Pressure Rating (Bar) ΔP				Seals	Part Number
			Min	Max 10W	Max -5.5W	Max =5.5W		
1/4	4.5	5	0	1	0.5	0.5	EPDM	PPA2-EPDM + voltage
	4.5	5	0	1	0.5	0.5	FKM	PPA2-FKM + voltage
	4.5	5	0	1	0.5	0.5	SILICONE	PPA2-SILICONE + voltage

### OPTIONS

IP65 Coil & Connector PG9 – DIN 43650 A

### ELECTRICAL DATA

Voltage (-10% + 15%) Continuous duty 100%	Coil	Power Consumption		Insulation class	Enclosure	Electrical connections
		Inrush	Holding			
~ 24 - 48 - 110 - 240 (50 or 60 Hz)	11630	26VA	14VA	F 155°C	IP 65 with connector	3 spades DIN 43650 DIN 40050 VDE 0110
= 6 - 12 - 24 - 48 (DC)		10 Watts				
~ 24 - 48 - 110 - 240 (50 or 60 Hz)	11630/55	16VA	12VA			
= 12 - 24 - 48 (DC)		5.5W				

### CONSTRUCTION

Body: Reinforced PPA (Polyphthalamide)  
 Tube and internal parts: Stainless steel (Dry Armature)  
 Seals and gasket: EPDM (Optional FKM & SILICONE)  
 Moulded coil: Resin

### REPAIR KIT

Coil	30 or 30/55 + voltage
Armature	SP + Valve Part Number – ARMATURE
Diaphragm	SP + Valve Part Number - DIAPHRAGM

### OVERALL DIMENSIONS

