

Media: Water
 Pressure: 12 Bar max
 Media temperature: -15°C to +80°C max
 Media viscosity: 50 centistokes max
 Mounting: any position

Anti Water Hammer

Brass Nickel Plated
 1/2 & 3/4 BSP
 12 Bar
TYPE AXT



PRESSURE

Ø Port BSP Male	Air Chamber CM ³	Dimensions			Part Number
		H	L	D	
1/2	17	105	85	45	AXT15-Brass
3/4	30	120	95	42	AXT20-Brass

OPTIONS

Flow controller
 Air inlet valve
 Other custom made pressure, seal and thread options available upon request

REPAIR KIT

Diaphragm Seal

Seal-part number

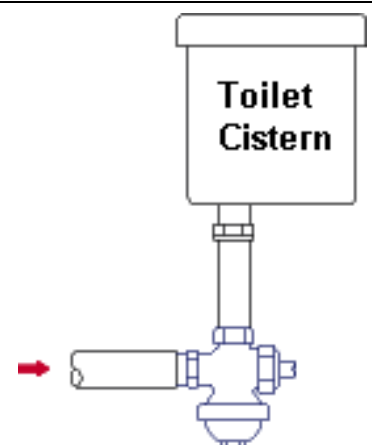
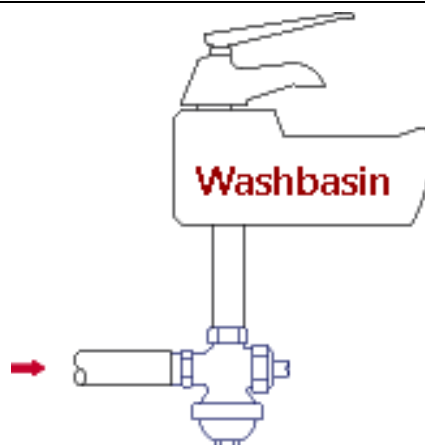
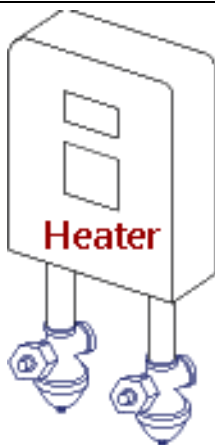
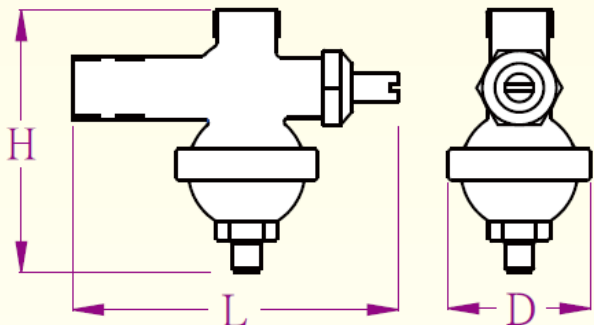
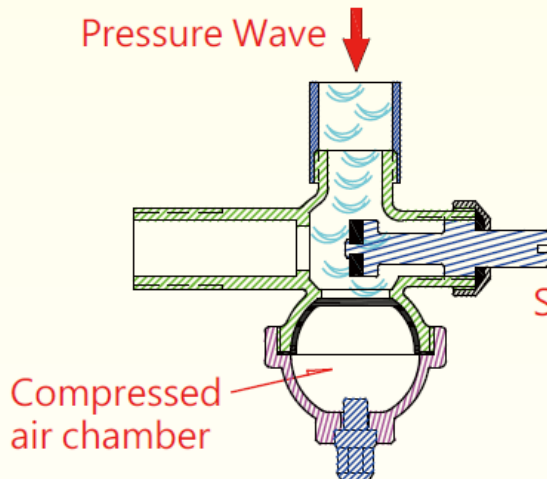
CONSTRUCTION

Body: Brass Nickel plated
 Seals: NBR

OVERALL DIMENSIONS

AXT Angle Water Hammer Arrestor

This design water hammer arrestor is for domestic. Patented and especially designed for easy installation and maintaining tranquillity for any indoor environment. Additionally the AXT patented design includes a flow controller to help reduce water flow, consumption and noise and is truly an environmentally friendly addition to any home. The air chamber pressure should be set at 1.0 Bar.



Water heaters are the most common causes of water hammer within the home as its complicated piping system can cause unstable pressure impact when turned on/off. Installing the AXT valve can reduce this. Also fitting the AXT valve to the outlet of the shower heater will reduce hammer from the shower hose. As you can see the AXT valve is ideally designed to fit easily in this application.

Fast response taps can cause water hammer effect that will echo through the pipework system. The AXT valve can reduce this when fitted to the water inlet pipe. As you can see the AXT valve is ideally designed to fit easily in this application.

When the water level in the Toilet Cistern is approaching full, the float ball valve can fluctuate hindering the flow and creates a series of backpressure waves causing water hammer. Installing the AXT water hammer arrestor at the water inlet will reduce this noise. As you can see the AXT valve is ideally designed to fit easily in this application.